



100% PIMA COTTON

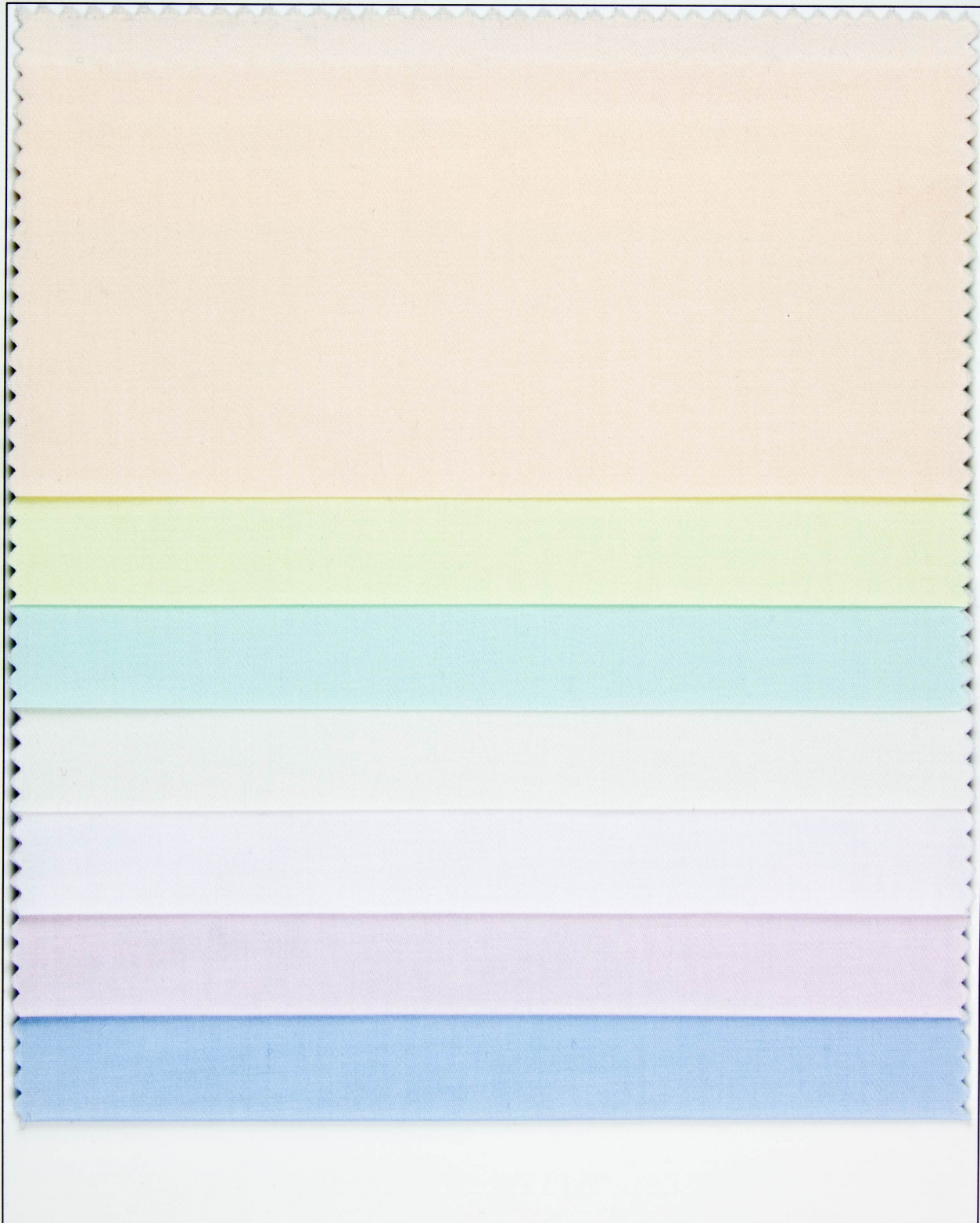
SATIN BATISTE

DESCRIPTION

This versatile 44/45" Satin Batiste consists of 100% combed mercerized pima cotton. This lightweight fabric offers a soft touch with a nice drape and luxurious satin finish. Suitable for shirting/blouses, children's/baby clothes, christening gowns, lining, smocking, heirloom sewing, evening wear, and much more! Available in white and pastel colors. Machine Washable.

SPECIFICATIONS

- Machine Washable
- Woven Yarn Dyed
- 100% Combed Mercerized Pima Cotton
- 44/45 Inches Wide



PEACH

MAIZE

MINT

CHAMPAGNE

WHITE

LT. PINK

LT. BLUE