



LINEN

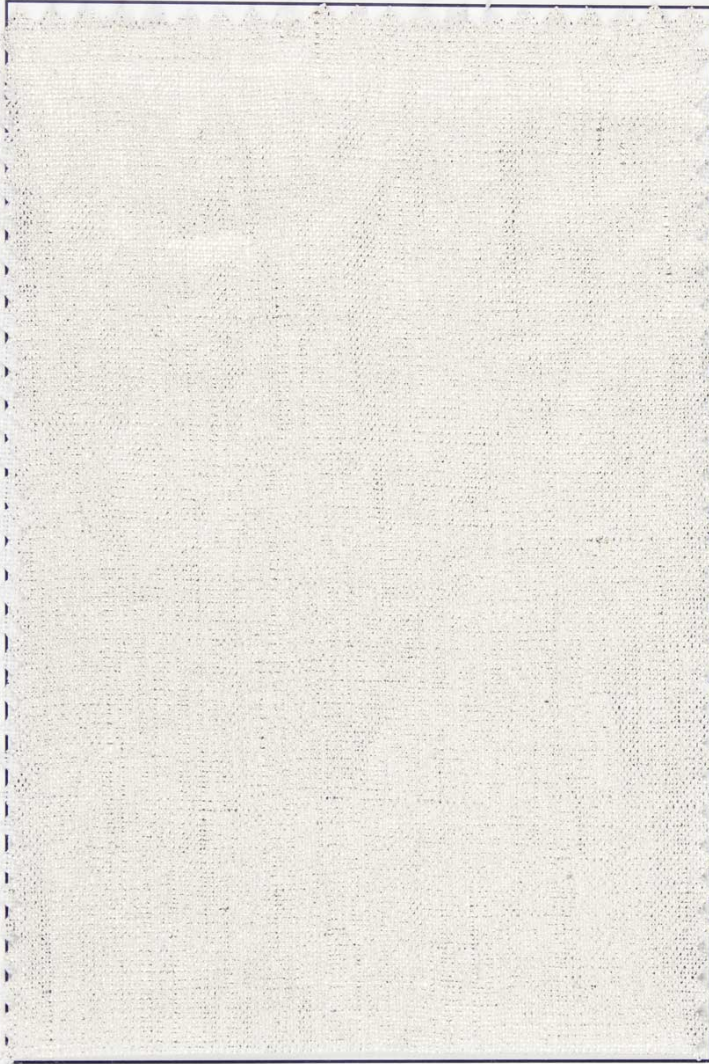
ROMA HANKEY

DESCRIPTION

This versatile 54/56" Roma Hankey consists of 100% Linen. Handkerchief weight offering a soft touch with a nice drape. Suitable for shirting/blouses, heirloom/smocking, dresses/skirts, window treatments, children's clothing, tablelinens and much more! Available in 6 colors.

SPECIFICATIONS

- 100% Linen
- 54/56 Inches Wide



GOLD ON IVORY








SILVER ON IVORY

GOLD ON OATMEAL

SILVER ON OATMEAL

GOLD ON BLACK

SILVER ON BLACK

WASHING PROCESS SYMBOL:	
1	 <ul style="list-style-type: none"> • maximum washing temperature 30°C • normal process
BLEACHING PROCESS SYMBOL:	
2	 <ul style="list-style-type: none"> • do not bleach/no bleach
TUMBLE DRYING PROCESS SYMBOL:	
3	 <ul style="list-style-type: none"> • do not tumble dry
IRONING PROCESS SYMBOL:	
4	 <ul style="list-style-type: none"> • iron at maximum sole plate temperature of 110°C • steam ironing may cause irreversible damage
PROFESSIONAL DRY CLEANING SYMBOL:	
5	 <ul style="list-style-type: none"> • professional dry cleaning in tetrachoroethene and all solvents listed for the symbol F • normal process