



**Spechler Vogel**  
TEXTILES  EST 1935

234 W. 39th Street, New York, NY 10018 Monday- Friday 9am-5pm  
212-564-6177 tel | 212-564-6178 fax | [info@spechlervogel.com](mailto:info@spechlervogel.com)

WOOL

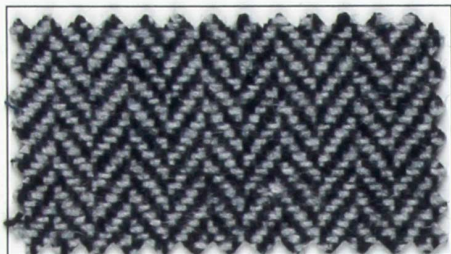
## HERRINGBONE ITALIAN WOOL

### DESCRIPTION

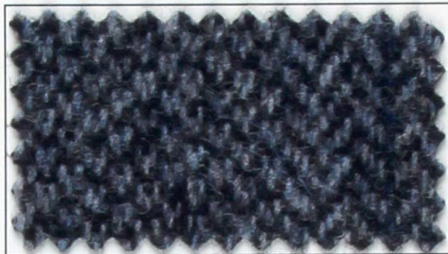
This versatile 58/60" Herringbone consists of 100% wool. Offers a felt-like-touch and a herringbone weave finish. Suitable for costuming, suiting apparel, jackets, pants, dresses/skirts, and much more! Available in 12 patterns. Dry Clean Recommended.

### SPECIFICATIONS

- Dry Clean Recommended
- 100% Wool
- 58/60 Inches Wide



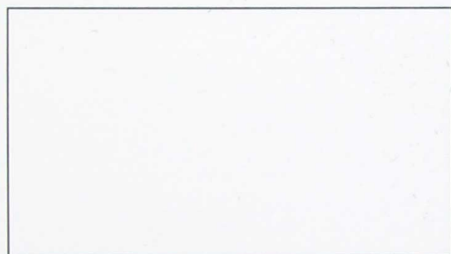
H.B. GRAY 1911-91M



H.B. BLUE-GRAY 28942-60



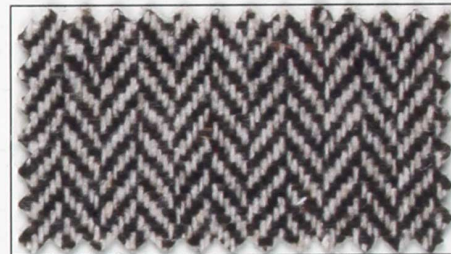
H.B. BROWN 9429-3



H.B. BLACK



H.B. TAUPE (F)



H.B. BROWN



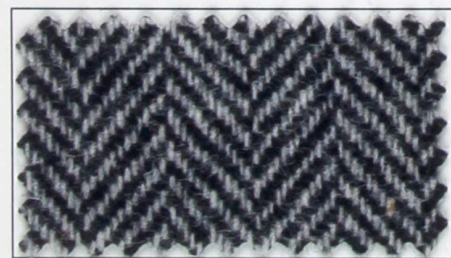
MAROON/CHARCOAL



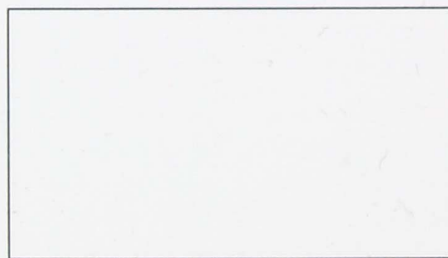
H.B. CAMEL 5341-60521



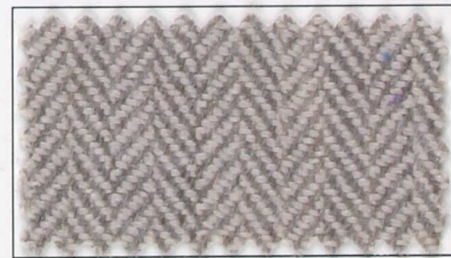
NAVY 9429-2



H.B. GRAY 3333-01018



CHARCOAL MULTI 3335-703



H.B. TAN OATMEAL 45080-947



H.B. BOTTLE GREEN



H.B. BROWN 15188-01



H.B. GREEN 5616-2246