



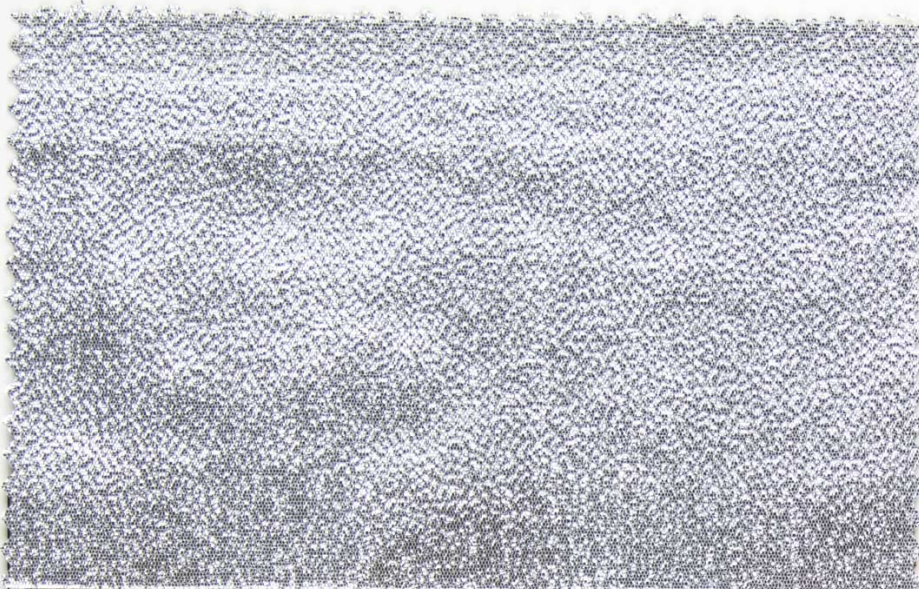
SPECIALTY
TISSUE LAME

DESCRIPTION

This versatile 44" Tissue Lame consists of 51% Nylon & 49% Metallic. Offers a slight rough touch with a crepe like texture. Suitable for blouses, lining apparel, party wear, stage costumes, fashion accessories and much more! Available in 47 colors. Machine Washable.

SPECIFICATIONS

- Machine Washable
- 51% Nylon
- 49% Metallic
- 44 Inches Wide



Surcharge Colors

- PEARL
- SILVER HOLOGRAM
- GOLD HOLOGRAM

