



SPECIALTY

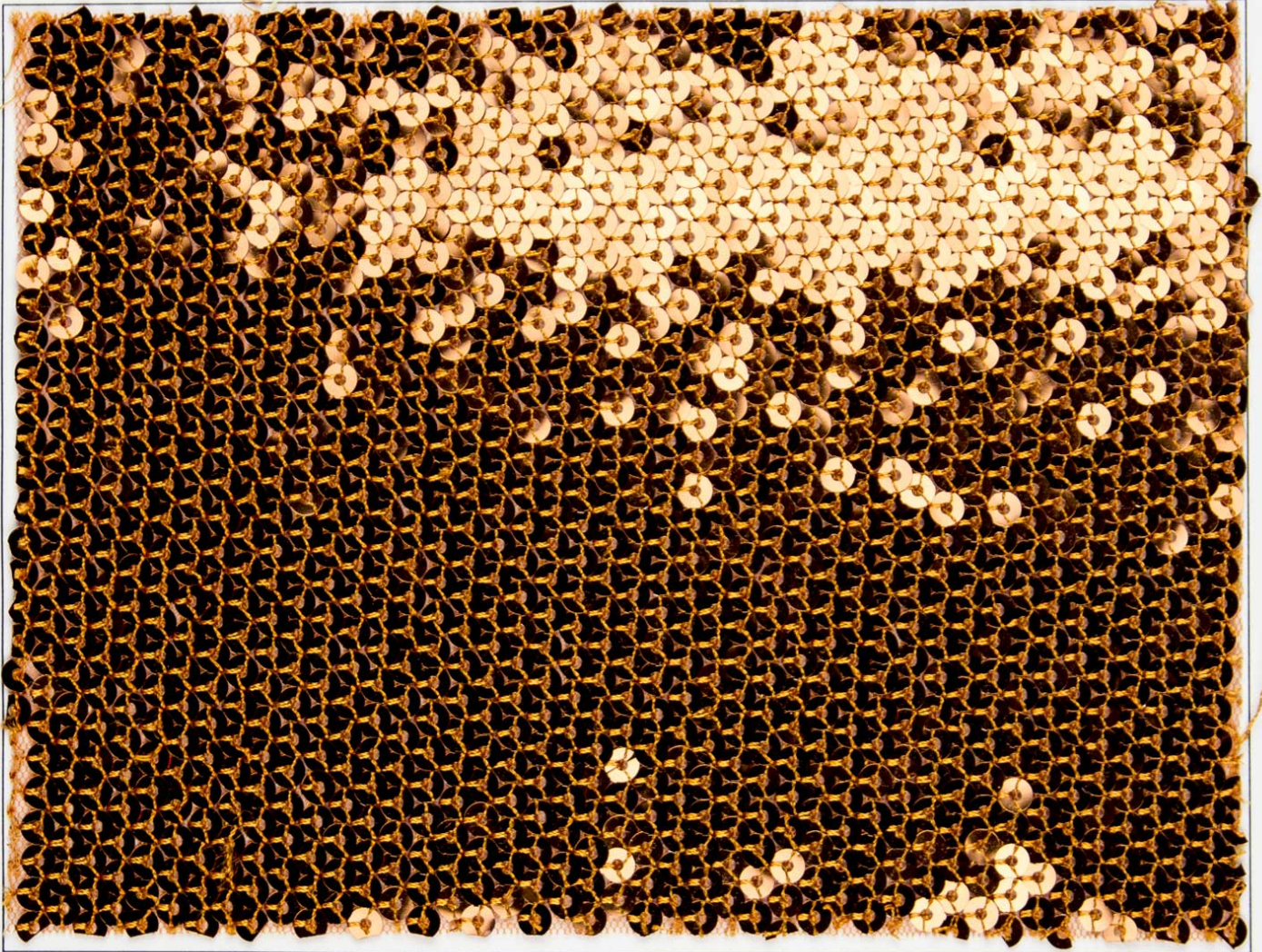
SHOWTIME SEQUIN

DESCRIPTION

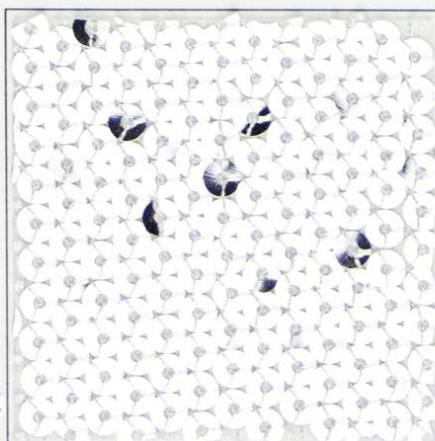
This versatile 52/54" Showtime Sequin consists of 50% Polyester 50% Nylon. Allover fishscale sequin on mesh offering a soft touch with a nice drape. Suitable for all costuming apparel, dresses/skirts, pants, jackets, upholstery and much more! Available in 23 colors. Machine Washable.

SPECIFICATIONS

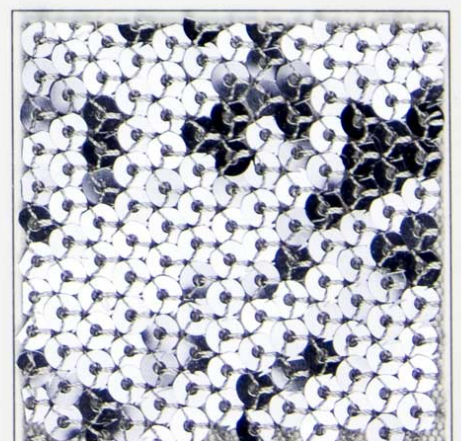
- Machine Washable
- Allover Fishscale on Mesh
- 50% Polyester
- 50% Nylon
- 52/54 Inches Wide



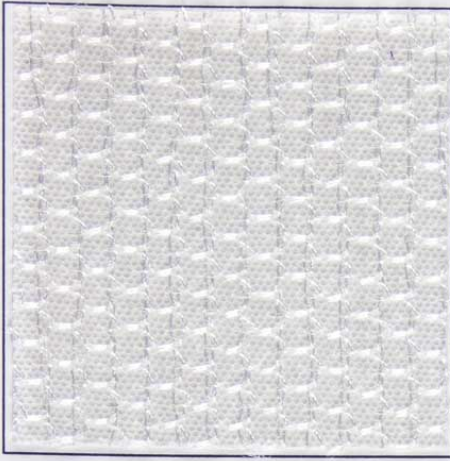
* SILVER (50112)



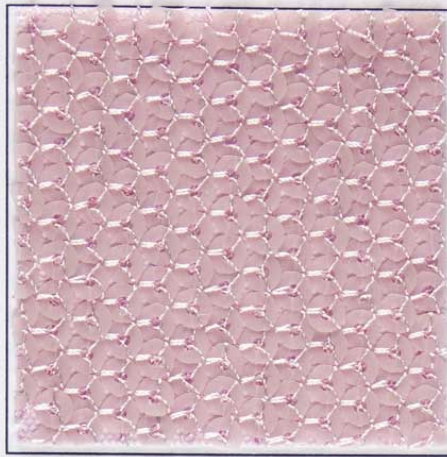
PLATINUM (1)



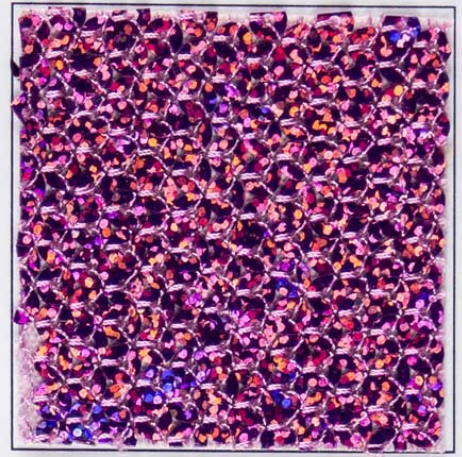
GUNMETAL (1202)



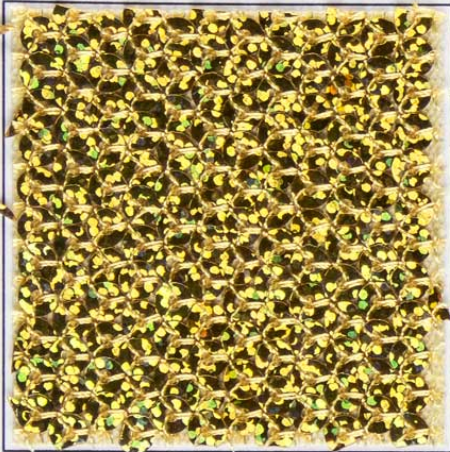
CLEAR WHITE (01)



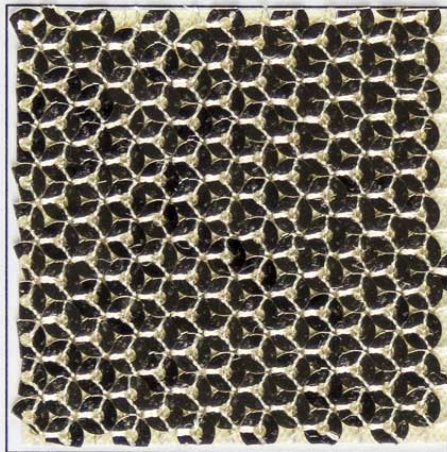
PINK (H040)



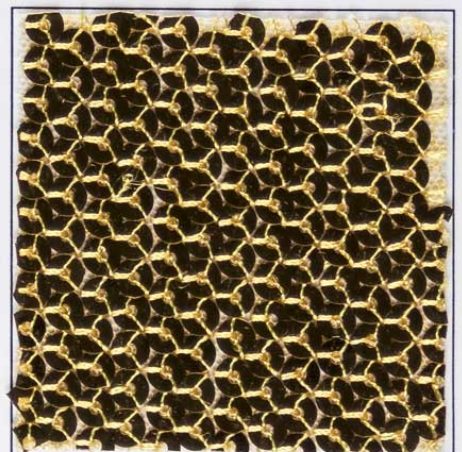
* COTTON CANDY (50126)



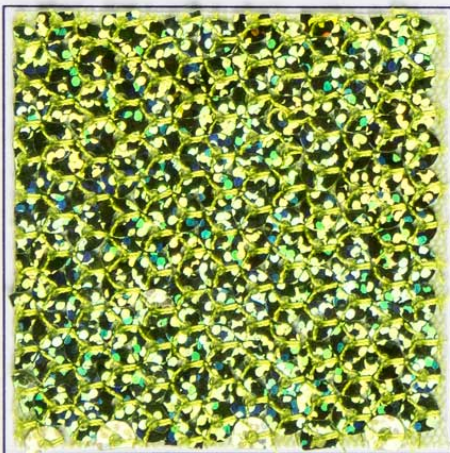
24 KARAT GOLD (M16)



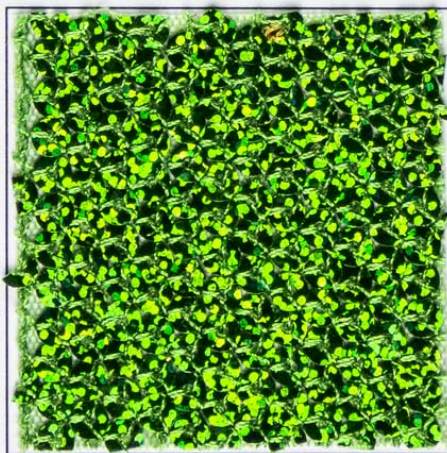
BRASS (A6)



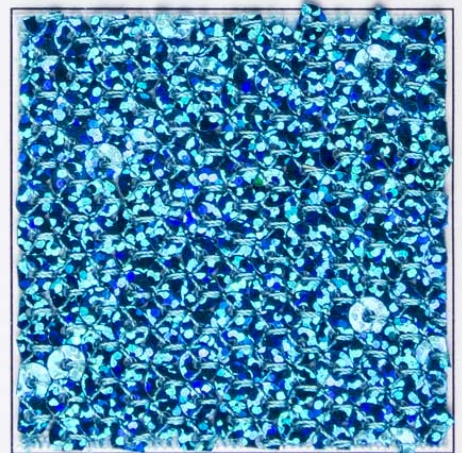
OLD GOLD (A1)



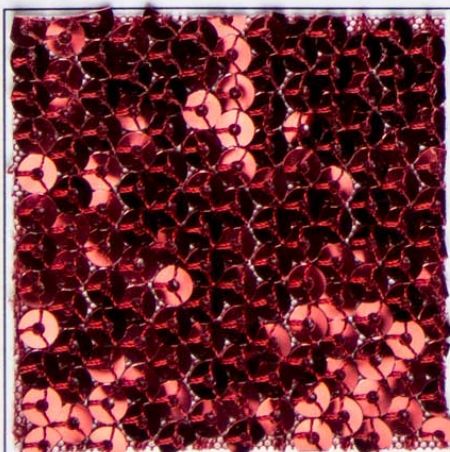
* CHARTREUSE (50105)



* KELLY (50104)



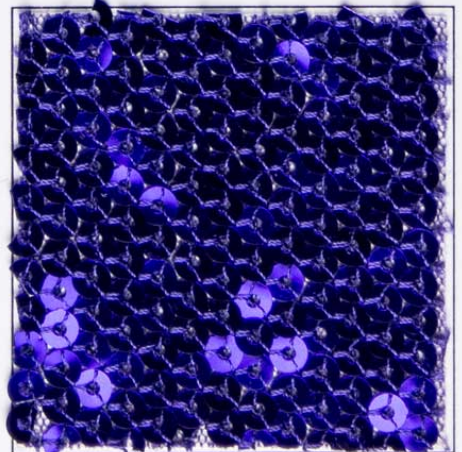
* TURQUOISE (50101)



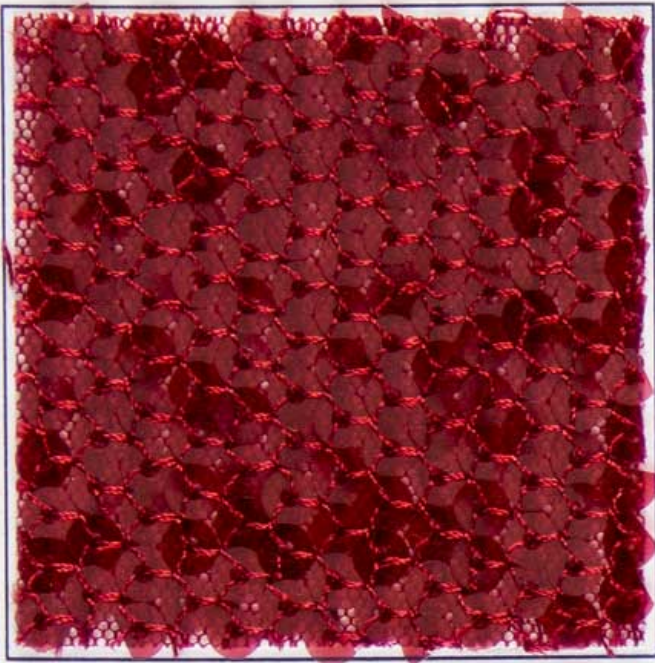
* FLAME (3)



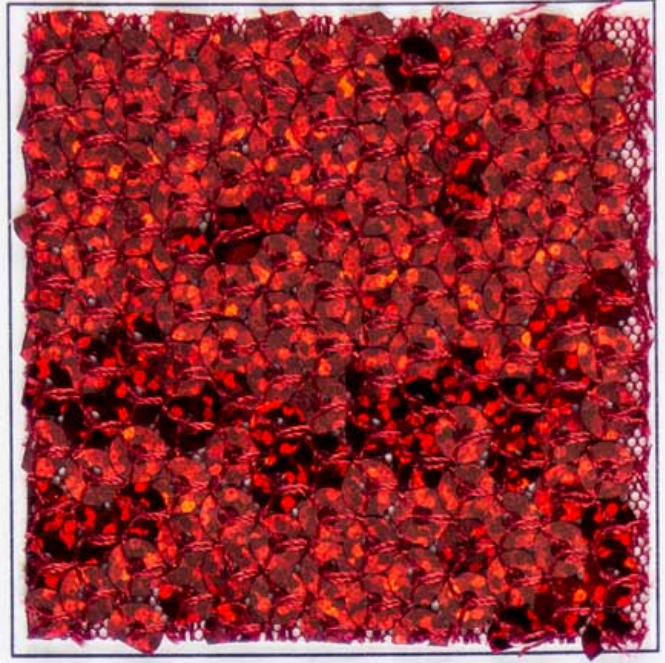
SANGRIA (8)



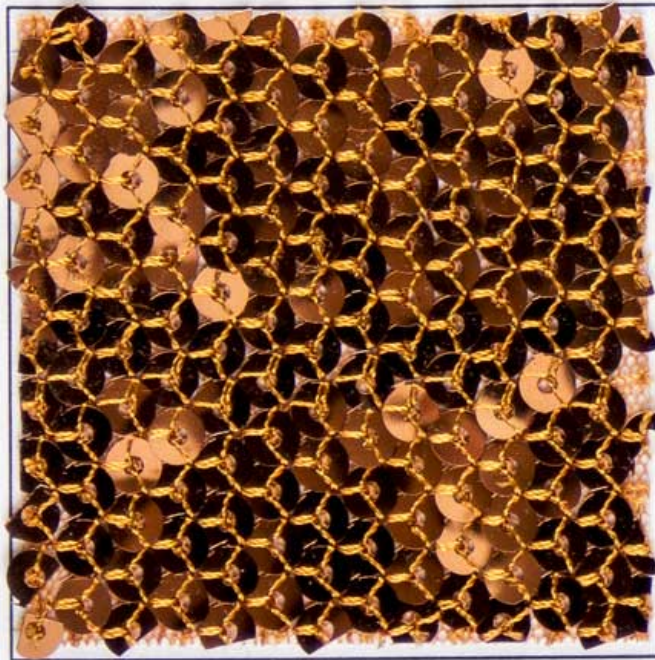
PURPLE (A2)



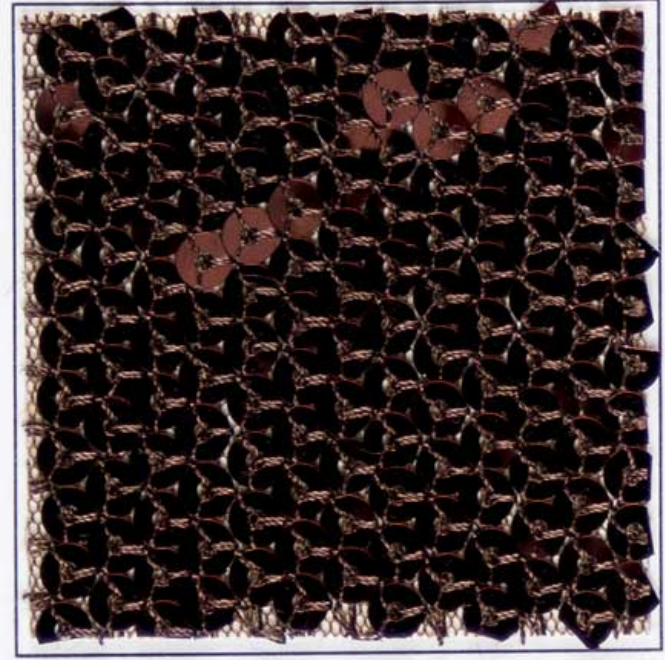
SCARLET (M05)



* RED HOT (50103)



COPPER (13)



BRONZE (140)

